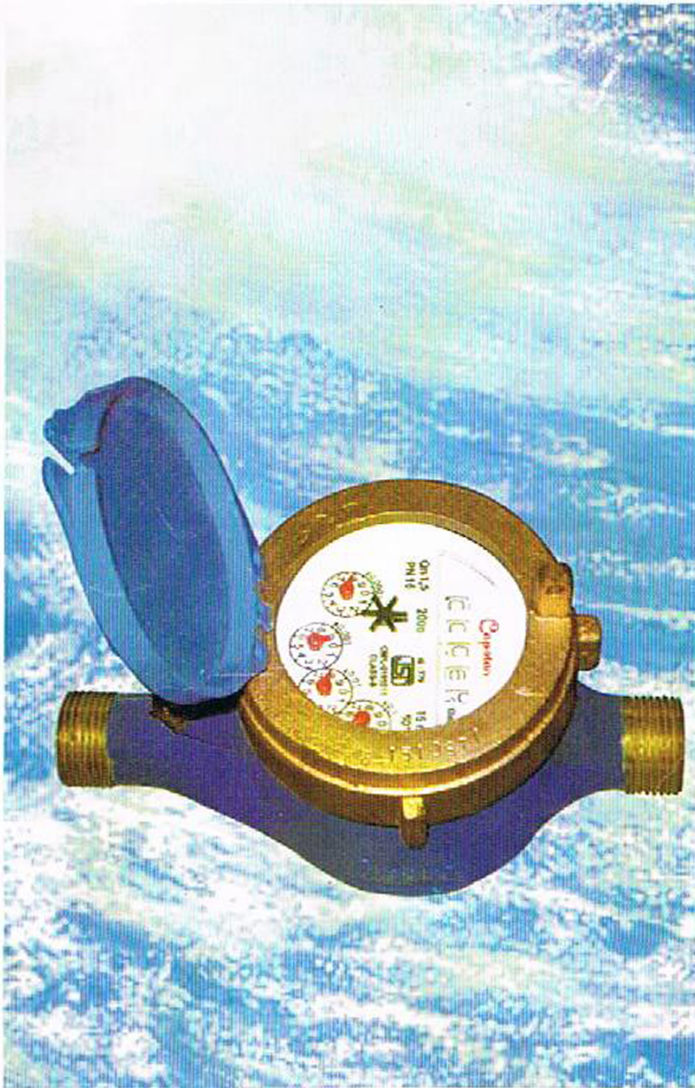


Capstan



Multi jet, dry dial, class 'B' domestic water meter

SALIENT FEATURES

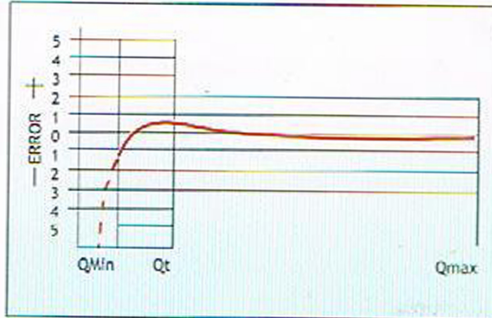
- Mature design, careful selection of material and quality control at different stages of manufacture ensures that Capstan meters are precise, robust and durable.
- High quality wear resistant imported materials are used. Special attention is paid to moving parts and bearings.
- Roller counter mechanism is driven through a magnetic coupling. It is completely separated from water and always stays clean and easily readable, even under adverse condition.
- The rotor is the only part which moves in water. It has a defined two point bearing and runs on sapphire jewel bearings.
- Have equally spaced tangential holes in the measuring chamber through which the water flows and impinges on the impeller equally on all sides. There being no side thrust, the bearing wear is reduced to its minimum.
- Offer high measurement sensitivity and accuracy.
- Suitable for water temperature up to 45°C
- Conforms to class 'B' of ISO : 4064/1 and IS:779 1994 and are ISI marked.

Capstan - The hallmark for quality and modern technology

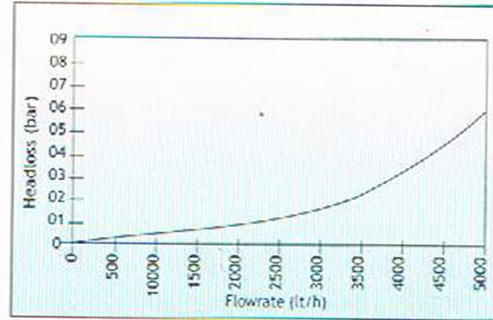
Capstan

TECHNICAL DATA

Accuracy Curve



Pressure Loss Curve



PERFORMANCE TABLE

Size of Meter	mm		15	20	25	40	50
Q_{max}	Maximum peak flow	$\pm 2\%$ l/h	3000	5000	7000	20000	30000
Q_n	Nominal flow	$\pm 2\%$ l/h	1500	2500	3500	10000	15000
Q_t	Transitional flow	$\pm 2\%$ l/h	120	200	280	800	1200
Q_{min}	Min. flow	$\pm 5\%$ l/h	30	50	70	200	300
	Test pressure	P_N bar	16	16	16	16	16
	Length face to face	L_1	165	190	260	300	330
	Length with nipples	L_2	250	290	380	430	470

